

1

2

3

4

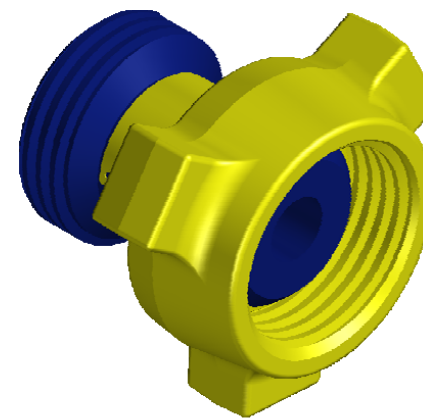
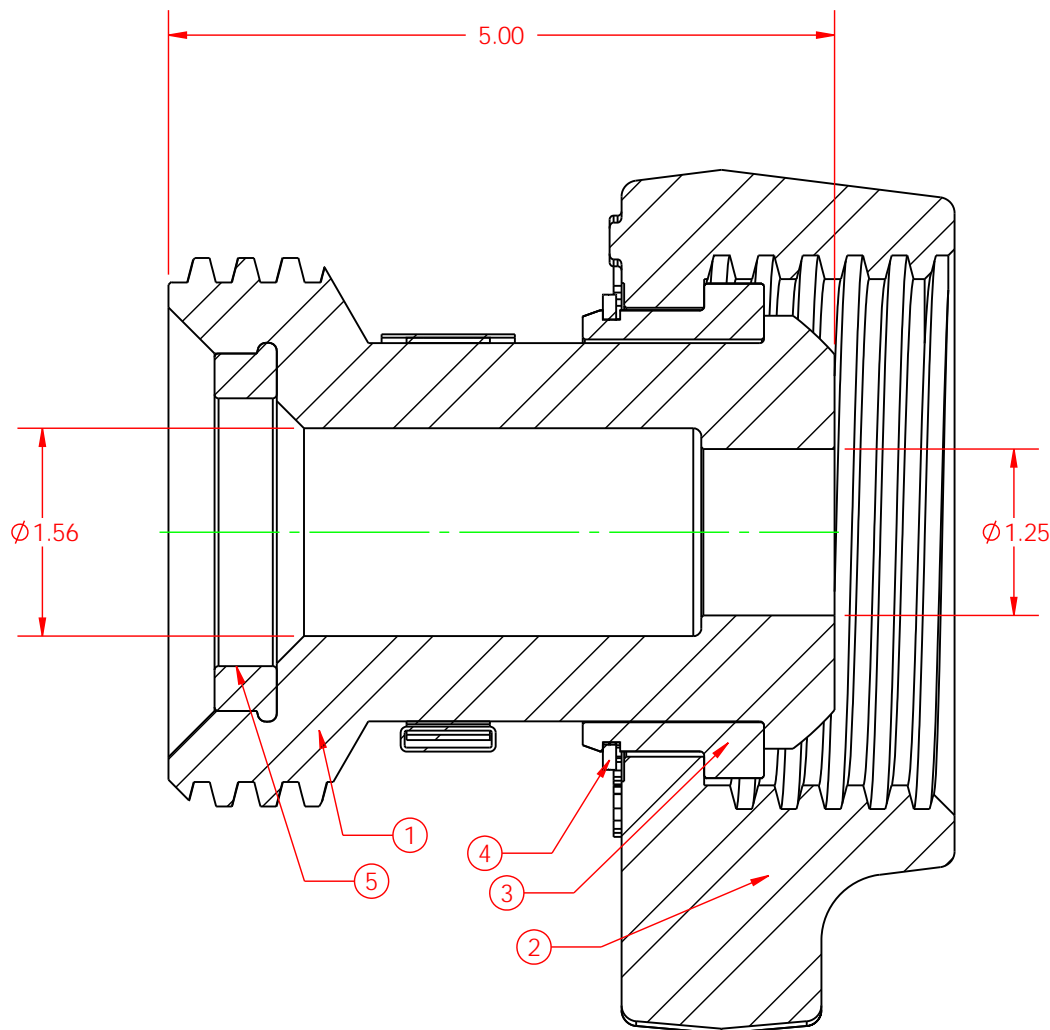
5

6

7

8

ITEM NO.	QTY.	PART NUMBER	DESCRIPTION
1	1	CC0012	CHOKE NIPPLE, 2"1502 STD 15M
2	1	UC0002	WINGNUT, 2"1502 STD (10lbs)
3	1	UC0003	NUT RETAINER SET, 2"1502
4	1	UC0004	SPIRAL RETAINER RING, 2"1502
5	1	UC0011	RESILIENT SEAL, 2"1502 STD (BUNA)



THIS DRAWING IS THE PROPERTY OF DIXIE IRON WORKS, LTD. THE BORROWER AGREES BY RECEIVING THE DRAWING TO RETURN IT UPON REQUEST AND TO NEITHER REPRODUCE COPY OR FURNISH INFORMATION FROM IT TO OTHERS WITHOUT EXPRESSED WRITTEN PERMISSION OF DIXIE IRON WORKS, LTD. ALL ARTICLES MANUFACTURED IN ACCORDANCE WITH THIS DRAWING SHALL BE CONSIDERED DESIGNS OF DIXIE IRON WORKS, LTD. AND MAY NOT BE USED OR SOLD WITHOUT DIXIE IRON WORKS, LTD. WRITTEN PERMISSION.

CHANGE MADE

ECN NUMBER

DESCRIPTION

CHOKE NIPPLE ASSY, 2"1502 STD 15M

MATERIAL/HEAT TREAT/ WELD PROCEDURE
STANDARD SERVICE
15,000 WORKING PRESSURE

DRAWN BY
RSEDATE
04/26/10WEIGHT
19 LBS.SHEET
SHEET 1 OF 1PART NUMBER
CA0009

300 West Main Street
Alice, TX 78332

www.dlwmsi.com
800.242.0059

MSI is a division of Dixie Iron Works, Ltd.

REV
0