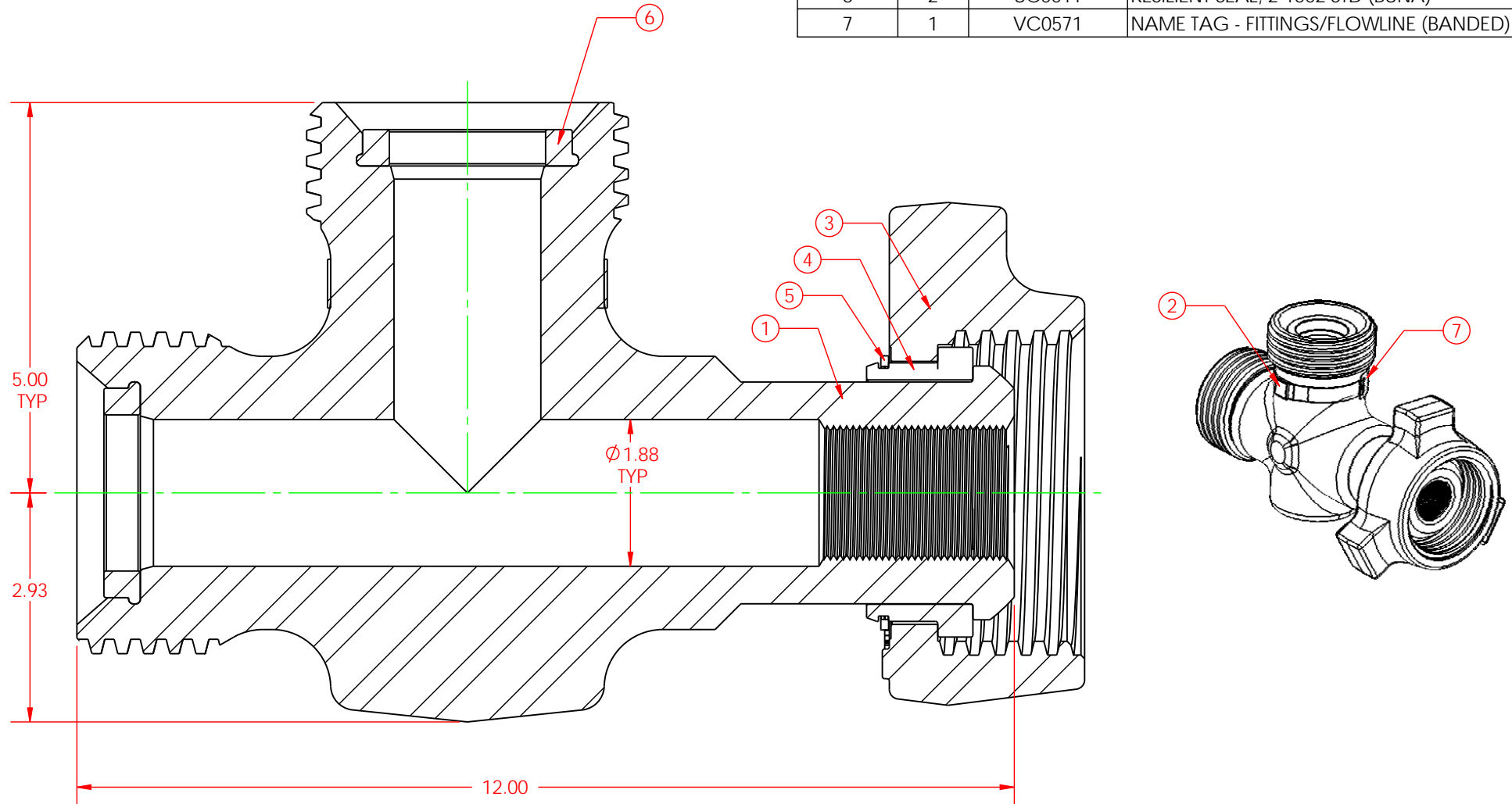


ITEM NO.	QTY.	PART NUMBER	DESCRIPTION
1	1	CC0043	CHOKE BODY, 2"1502 STD 15M
2	1	HC0237	BANDING, F-CLAMP OPEN END 5/8"WIDE x 2.50"ID
3	1	UC0002	WINGNUT, 2"1502 STD
4	1	UC0003	NUT RETAINER SET, 2"1502
5	1	UC0004	SPIRAL RETAINER RING, 2"1502
6	2	UC0011	RESILIENT SEAL, 2"1502 STD (BUNA)
7	1	VC0571	NAME TAG - FITTINGS/FLOWLINE (BANDED)



THIS DRAWING IS THE PROPERTY OF DIXIE IRON WORKS, LTD. THE BORROWER AGREES BY RECEIVING THE DRAWING TO RETURN IT UPON REQUEST AND TO NEITHER REPRODUCE COPY OR FURNISH INFORMATION FROM IT TO OTHERS WITHOUT EXPRESSED WRITTEN PERMISSION OF DIXIE IRON WORKS, LTD. ALL ARTICLES MANUFACTURED IN ACCORDANCE WITH THIS DRAWING SHALL BE CONSIDERED DESIGNS OF DIXIE IRON WORKS, LTD. AND MAY NOT BE USED OR SOLD WITHOUT DIXIE IRON WORKS, LTD. WRITTEN PERMISSION.

NOTES
 1. BREAK ALL EDGES 0.008/0.016 x 45° OR R0.008/0.016 EXCEPT THREADS.
 2. ALL MACHINED CORNER RADII TO BE R0.031.
 3. ALL DIMENSIONS ARE IN INCHES (UNLESS OTHERWISE STATED).
 4. BLUNT START ALL ACME THREADS.
 5. ALL DIAMETERS TO BE CONCENTRIC WITHIN 0.005" (UNLESS OTHERWISE STATED).
 6. MACHINED SURFACES TO BE 325µm Ra (UNLESS OTHERWISE STATED).
 7. ALL DIMENSIONS IN PARENTHESIS ARE REFERENCE DIMENSIONS (0.000).
 8. 'Q' DENOTES SYMMETRY BETWEEN FEATURES, ABOUT 'Q' AXIS, UNLESS NOTED OTHERWISE.

THIRD ANGLE PROJECTION

UNSPECIFIED TOLERANCES	REVISION	CHANGE MADE	ECN NUMBER
FRACTIONS ±1/64 DECIMALS .XX ±0.015 XXX ±0.005 XXXX ±0.001 ANGLE ±1/2°	0		

DATUM INDICATING SYMBOL	CONCENTRICITY	ANGULARITY	RUNOUT	COUNTERBORE
⊕	◎	∠	↗	⌒
POSITION	FLATNESS	PERPENDICULARITY	PARALLELISM	COUNTERSINK
⊕	▭	⊥	//	∇

DESCRIPTION	MATERIAL/HEAT TREAT/WELD PROCEDURE	WEIGHT	SHEET
CHOKE TEE, 2"1502 STD 15M	STANDARD SERVICE 15,000 PSI WORKING PRESSURE	43 LB	1 OF 1

DRAWN BY	DATE	PART NUMBER	REV
WJT	9/26/07	CA0014	0

300 West Main Street
Alice, TX 78332
www.dixieiron.com
800.242.0059
MSI is a division of Dixie Iron Works, Ltd.