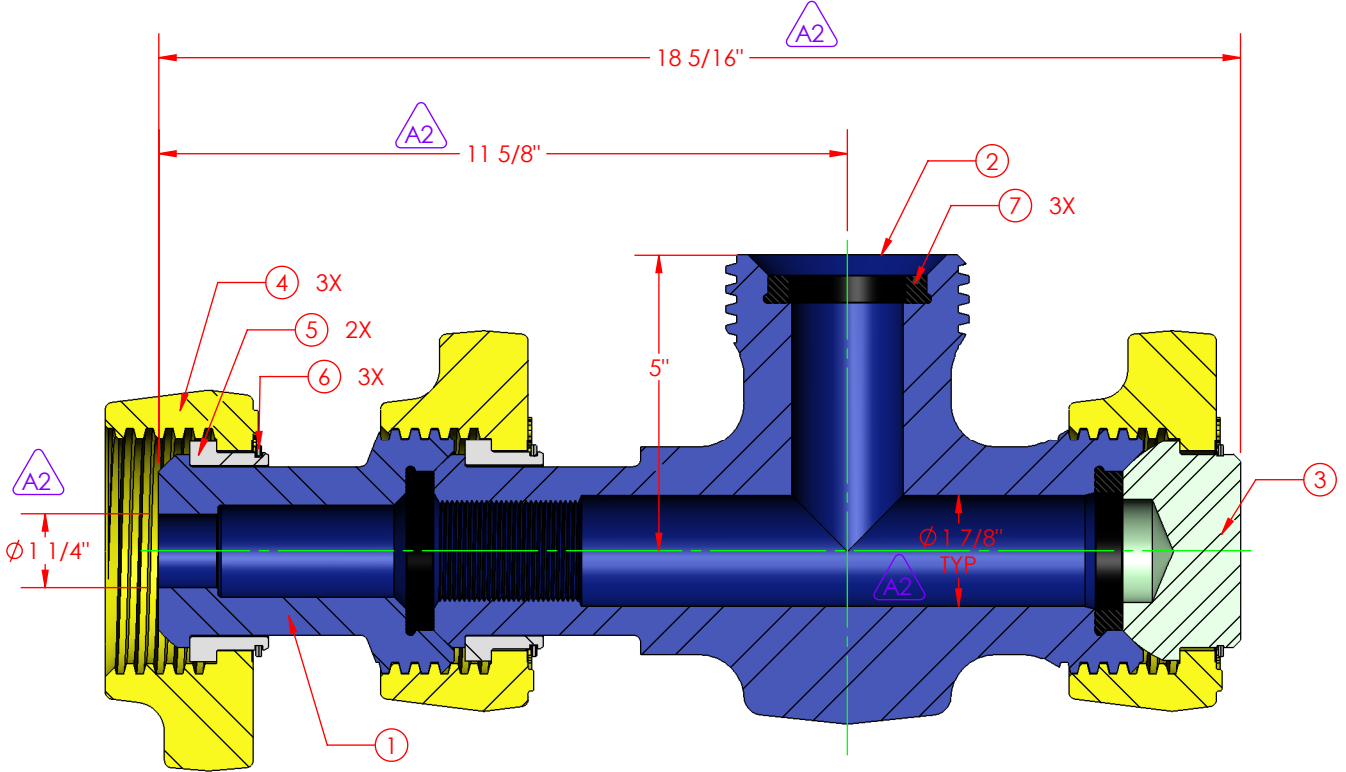
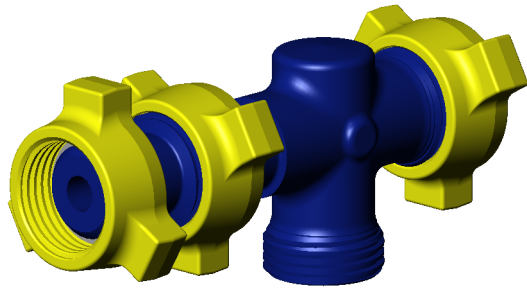
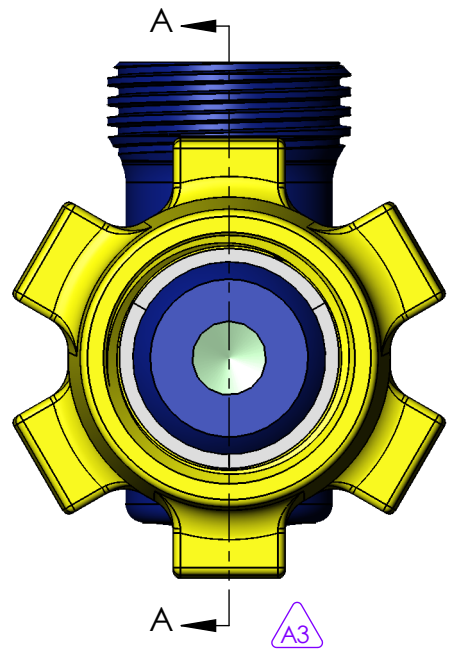


ITEM NO.	QTY.	PART NUMBER	DESCRIPTION
1	1	CC0012	CHOKE NIPPLE, 2"1502 STD 15M
2	1	CC0043	CHOKE BODY, 2"1502 STD 15M
3	1	UC0001	CHOKE CAP, 2"1502M H2S 15M
4	3	UC0002	WINGNUT, 2"1502 STD
5	2	UC0003	NUT RETAINER SET, 2"1502
6	3	UC0004	SPIRAL RETAINER RING, 2"1502
7	3	UC0011	RESILIENT SEAL, 2"1502 STD (BUNA)

A1



SECTION A-A



A3

A4

E.C.N. NUMBER		DESCRIPTION	
5096		POS CHOKE, 2"1502FM STD 15M	
WORKING PRESSURE:	TEMPERATURE CLASS:	DRAWN BY:	
15,000 PSI	PU	HP	
RETAINED FLUIDS:	PR LEVEL:	DATE:	
BB	1	11/15/2007	
WEIGHT:	SHEET:	PART NUMBER:	REV:
75 LBS.	SHEET 1 OF 1	CA0022	A

CHANGE MADE	REVISED BY	DATE
1) REMOVED ID BANDING TAG FROM BOM	RSE	05/20/2014
2) DIMS WERE DECIMAL: NOW FRACTIONAL		
3) ADDED PARENT VIEW		
4) UPDATED DRAWING TEMPLATE		
5)		
6)		
7)		
8)		



THIS DRAWING IS THE PROPERTY OF DIXIE IRON WORKS, LTD. THE BORROWER AGREES BY RECEIVING THE DRAWING TO RETURN IT UPON REQUEST AND TO NEITHER REPRODUCE COPY OR FURNISH INFORMATION FROM IT TO OTHERS WITHOUT EXPRESSED WRITTEN PERMISSION OF DIXIE IRON WORKS, LTD. ALL ARTICLES MANUFACTURED IN ACCORDANCE WITH THIS DRAWING SHALL BE CONSIDERED DESIGNS OF DIXIE IRON WORKS, LTD. AND MAY NOT BE USED OR SOLD WITHOUT DIXIE IRON WORKS, LTD. WRITTEN PERMISSION.