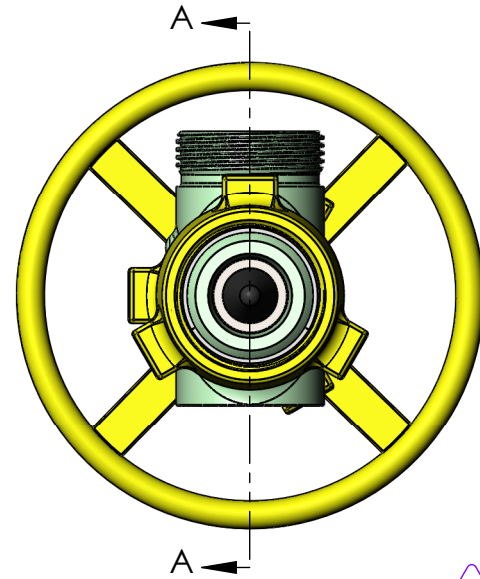
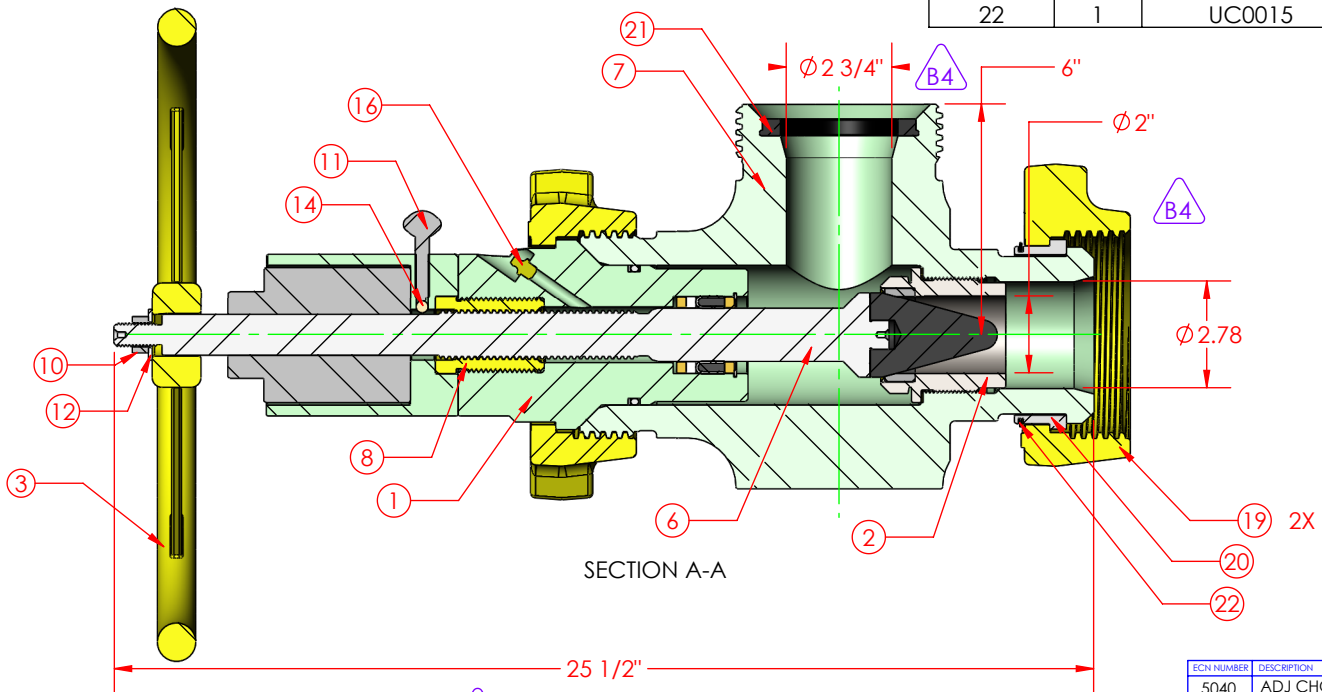


| ITEM NO. | QTY. | PART NUMBER | DESCRIPTION |
|----------|------|-------------|---|
| 1 | 1 | CC0006 | BONNET, 3" H2S 15M H-2 (HAMMER) |
| 2 | 1 | CC0007 | CHOKE SEAT, 2" MAX CARBIDE H-2 |
| 3 | 1 | CC0008 | HANDWHEEL, 3" ADJ CHOKE 2" MAX |
| 4 | 1 | CC0027 | CHOKE PACKING, H2 COMPLETE (2" MAX) |
| 5 | 1 | CC0034 | CHOKE INDICATOR, 2" MAX CARBIDE H-2 |
| 6 | 1 | CC0059 | CHOKE STEM, 2" MAX TUNGSTEN CARBIDE H-2 |
| 7 | 1 | CC0211 | CHOKE BODY, 3" 1502FM H2S 10M 2" MAX |
| 8 | 1 | CC0285 | BONNET THREAD BUSHING, 3" CHOKE |
| 9 | 1 | CC0286 | BONNET EXTENSION, 3" MSI MANUAL |
| 10 | 1 | HC0012 | HEX NUT, 5/8"-11 HEAVY HEX 2H |
| 11 | 1 | HC0013 | THUMB SCREW, 3/8"-16 x 1.50" (NYLON TIPPED) |
| 12 | 1 | HC0014 | FLAT WASHER, 5/8" STD |
| 13 | 2 | HC0111 | LOCK WASHER, 1/4" HIGH COLLAR |
| 14 | 1 | HC0177 | BALL, 5/16" BRASS CDA270 GRADE 200 |
| 15 | 2 | HC0203 | SOC HD, 1/4"-20 x 1.50" |
| 16 | 1 | HC0517 | GREASE FITTING, 1/8" NPT ALEMITE |
| 17 | 1 | OC0023 | O-RING, 3" BONNET H2S (2-339) |
| 18 | 1 | OC0024 | PAR-BACK, 3" BONNET H2S (8-339) |
| 19 | 2 | UC0005 | WINGNUT, 3" 1502 H2S |
| 20 | 1 | UC0006 | NUT RETAINER SET, 3" 1502 |
| 21 | 1 | UC0014 | RESILIENT SEAL, 3" 1502 H2S (HNBR) |
| 22 | 1 | UC0015 | SPIRAL RETAINER RING, 3" 1502 |

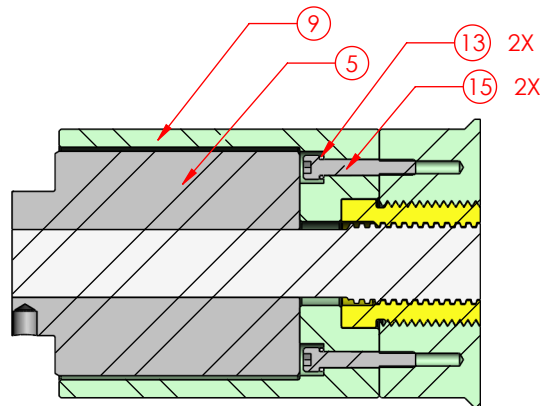


| CHANGE MADE | REVISED BY | RSE | DATE | 04/01/2014 |
|--|------------|-----|------|------------|
| 1) SORTED BOM BY PART NUMBER | | | | |
| 2) ADDED HC0111 | | | | |
| 3) ADDED HC0517 WITH UPDATED CC0006 | | | | |
| 4) DIMS WERE DECIMAL: NOW FRACTIONAL | | | | |
| 5) ADDED ISOMETRIC VIEW WITH INDICATION ARROWS | | | | |
| 6) UPDATED DRAWING TEMPLATE | | | | |
| 7) QAL WAS AT 25.04: NOW AT 25 $\frac{1}{2}$ " | | | | |
| 8) ADDED SHEET TWO | | | | |

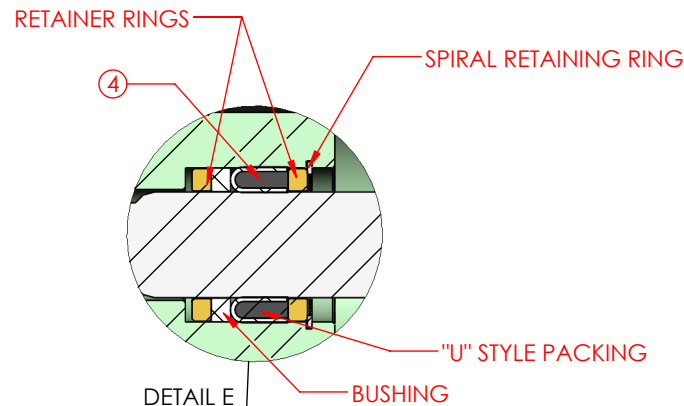
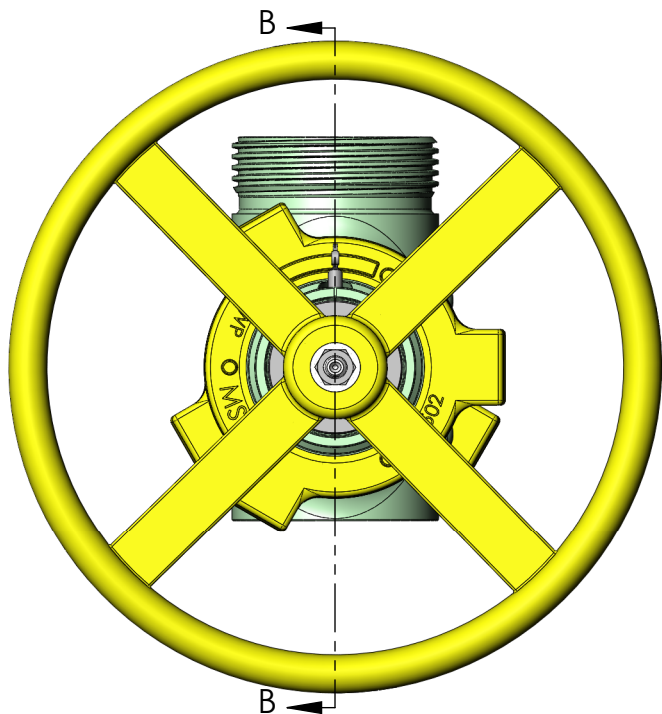
| ECH NUMBER | | DESCRIPTION | |
|-------------------|--------------------|-------------------------------------|--|
| 5040 | | ADJ CHOKE, 3" 1502FM H2S 10M 2" MAX | |
| WORKING PRESSURE: | TEMPERATURE CLASS: | DRAWN BY: | |
| 10,000 PSI | LU | HAHII | |
| RETAINED FLUIDS: | PR LEVEL: | DATE: | |
| EE-0.5 | 1 | 8/22/02 | |
| WEIGHT: | SHEET: | PART NUMBER: | |
| 157 LBS. | SHEET 1 OF 2 | CA0035 | |



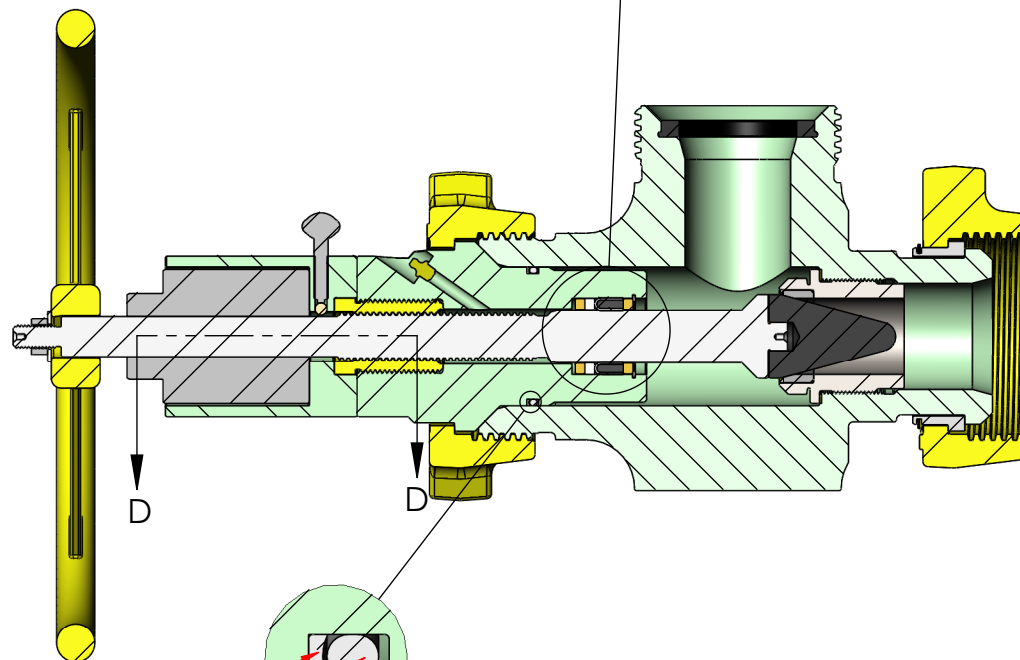
MSI IS A DIVISION OF DIXIE IRON WORKS, LTD.



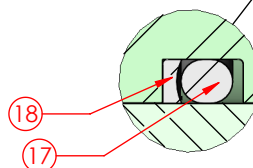
SECTION D-D



DETAIL E



SECTION B-B



DETAIL C

| | | | | | |
|--|--------------------|-----------------------------------|-----|------|------------|
| CHANGE MADE | | REVISED BY | RSE | DATE | 04/01/2014 |
| 1) SORTED BOM BY PART NUMBER | | | | | |
| 2) ADDED HC0111 | | | | | |
| 3) ADDED HC0517 WITH UPDATED CC0006 | | | | | |
| 4) DIMS WERE DECIMAL; NOW FRACTIONAL | | | | | |
| 5) ADDED ISOMETRIC VIEW WITH INDICATION ARROWS | | | | | |
| 6) UPDATED DRAWING TEMPLATE | | | | | |
| 7) QAL WAS AT 25.04; NOW AT 25 1/2" | | | | | |
| 8) ADDED SHEET TWO | | | | | |
| ECON NUMBER | | 5040 | | | |
| DESCRIPTION | | ADJ CHOKE, 3"1502FM H2S 10M 2"MAX | | | |
| WORKING PRESSURE: | TEMPERATURE CLASS: | DRAWN BY: | | | |
| 10,000 PSI | LU | HAHII | | | |
| RETAINED FLUIDS: | PR LEVEL: | DATE: | | | |
| EE-0.5 | 1 | 8/22/02 | | | |
| WEIGHT: | SHEET: | PART NUMBER: | | | |
| 157 LBS. | SHEET 2 OF 2 | CA0035 | | | |

B8



300 WEST MAIN ST.
ALICE, TX 78332
www.diwmsi.com
800.242.0059
MSI IS A DIVISION OF DIXIE IRON WORKS, LTD.

THIS DRAWING IS THE PROPERTY OF DIXIE IRON WORKS, LTD. THE BORROWER AGREES BY RECEIVING THE DRAWING TO RETURN IT UPON REQUEST AND TO NEITHER REPRODUCE COPY OR FURNISH INFORMATION FROM IT TO OTHERS WITHOUT EXPRESSED WRITTEN PERMISSION OF DIXIE IRON WORKS, LTD. ALL ARTICLES MANUFACTURED IN ACCORDANCE WITH THIS DRAWING SHALL BE CONSIDERED DESIGNS OF DIXIE IRON WORKS, LTD. AND MAY NOT BE USED OR SOLD WITHOUT DIXIE IRON WORKS, LTD. WRITTEN PERMISSION.