

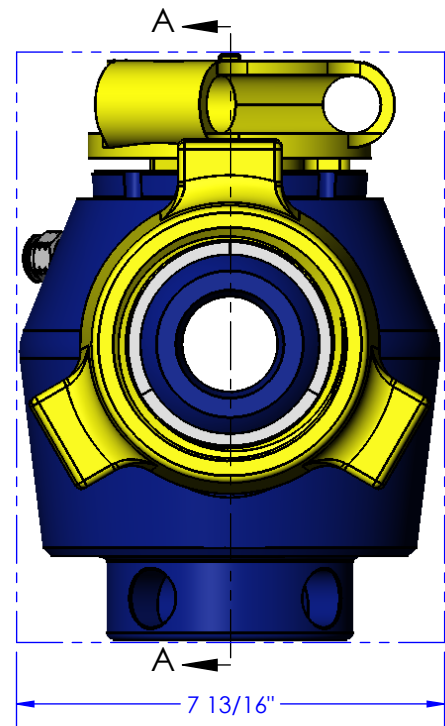
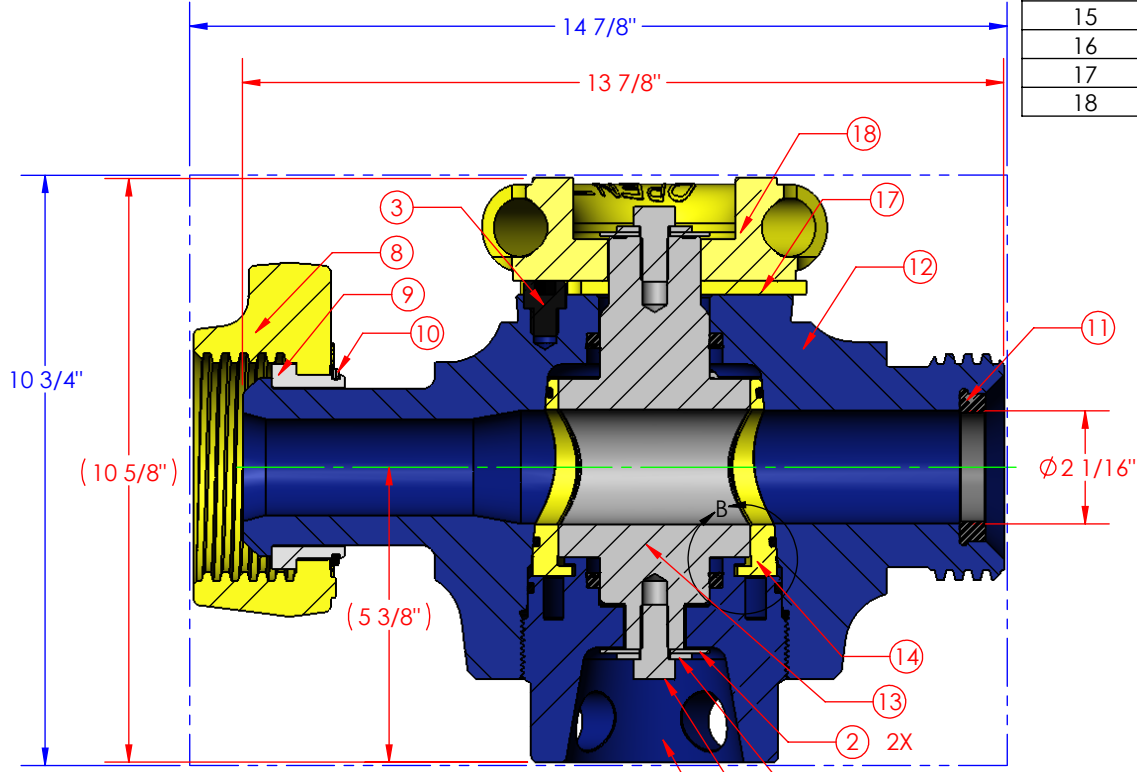
2X (16)

2X (6)

(7)

DETAIL B

ITEM NO.	QTY.	PART NUMBER	DESCRIPTION
1	2	HC0006	FLAT WASHER, 1/2" STD
2	2	HC0007	FLAT WASHER, 1/2" FENDER (2"OD)
3	1	HC0008	SOC HD, 1/2"-13 x 0.50"
4	2	HC0009	HEX HD, 1/2"-20 x 1.00"
5	1	HC0226-PSL3	GREASE FITTING, 3/4" SAFETAP H2S GBH - PSL3
6	2	OC0011	O-RING, 2" INSERT STD (2-230 BUNA 90)
7	1	OC0012	O-RING, 2" ADJ NUT STD (2-245 BUNA 90)
8	1	UC0002-PSL3	WINGNUT, 2"1502 STD PSL3
9	1	UC0003-PSL3	NUT RETAINER SET, 2"1502 PSL3
10	1	UC0004	SPIRAL RETAINER RING, 2"1502
11	1	UC0011	RESILIENT SEAL, 2"1502 STD (BUNA)
12	1	VC0022-PSL3	VLV BODY, 2" x 2"1502 STD 15M PSL3
13	1	VC0024-PSL3	PLUG, 2"STD PSL3
14	1	VC027S-PSL3	INSERT SET, 2" STD PSL3 (SPLIT)
15	1	VC0028-PSL3	ADJUSTING NUT, 2" H2S PSL3
16	2	VC0060	PLUG SEAL, 1.75" - 3" STD (BUNA/BRASS)
17	1	VC0061	STOP COLLAR, 1.75" - 3.00" VALVE
18	1	VC0062	HANDLE ADAPTER, 1.75" - 3.00" VALVE



E/CN NUMBER		DESCRIPTION	
		VALVE, 2" x 2"1502 STD 15M PSL3	
WORKING PRESSURE:	TEMPERATURE CLASS:	DRAWN BY:	
15,000 PSI	PU	RSE	
RETAINED FLUIDS:	PR LEVEL:	DATE:	
AA	1	10/01/2014	
WEIGHT:	SHEET:	PART NUMBER:	REV:
95 lbs	SHEET 1 OF 1	VA0006-S-PSL3	0

CHANGE MADE	REVISED BY	DATE
1)		
2)		
3)		
4)		
5)		
6)		
7)		
8)		

300 WEST MAIN ST.
ALICE, TX 78332

www.diwmsi.com
800.242.0059

MSI IS A DIVISION OF DIXIE IRON WORKS, LTD.

THIS DRAWING IS THE PROPERTY OF DIXIE IRON WORKS, LTD. THE BORROWER AGREES BY RECEIVING THE DRAWING TO RETURN IT UPON REQUEST AND TO NEITHER REPRODUCE COPY OR FURNISH INFORMATION FROM IT TO OTHERS WITHOUT EXPRESSED WRITTEN PERMISSION OF DIXIE IRON WORKS, LTD. ALL ARTICLES MANUFACTURED IN ACCORDANCE WITH THIS DRAWING SHALL BE CONSIDERED DESIGNS OF DIXIE IRON WORKS, LTD. AND MAY NOT BE USED OR SOLD WITHOUT DIXIE IRON WORKS, LTD. WRITTEN PERMISSION.