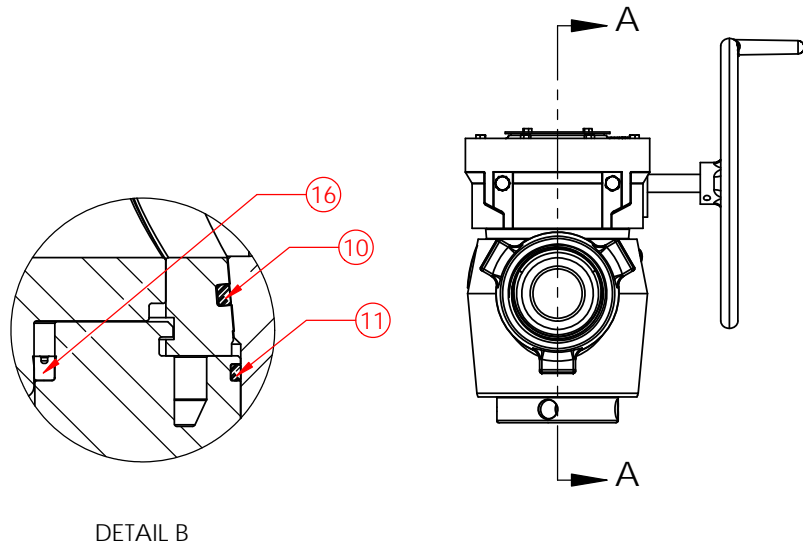
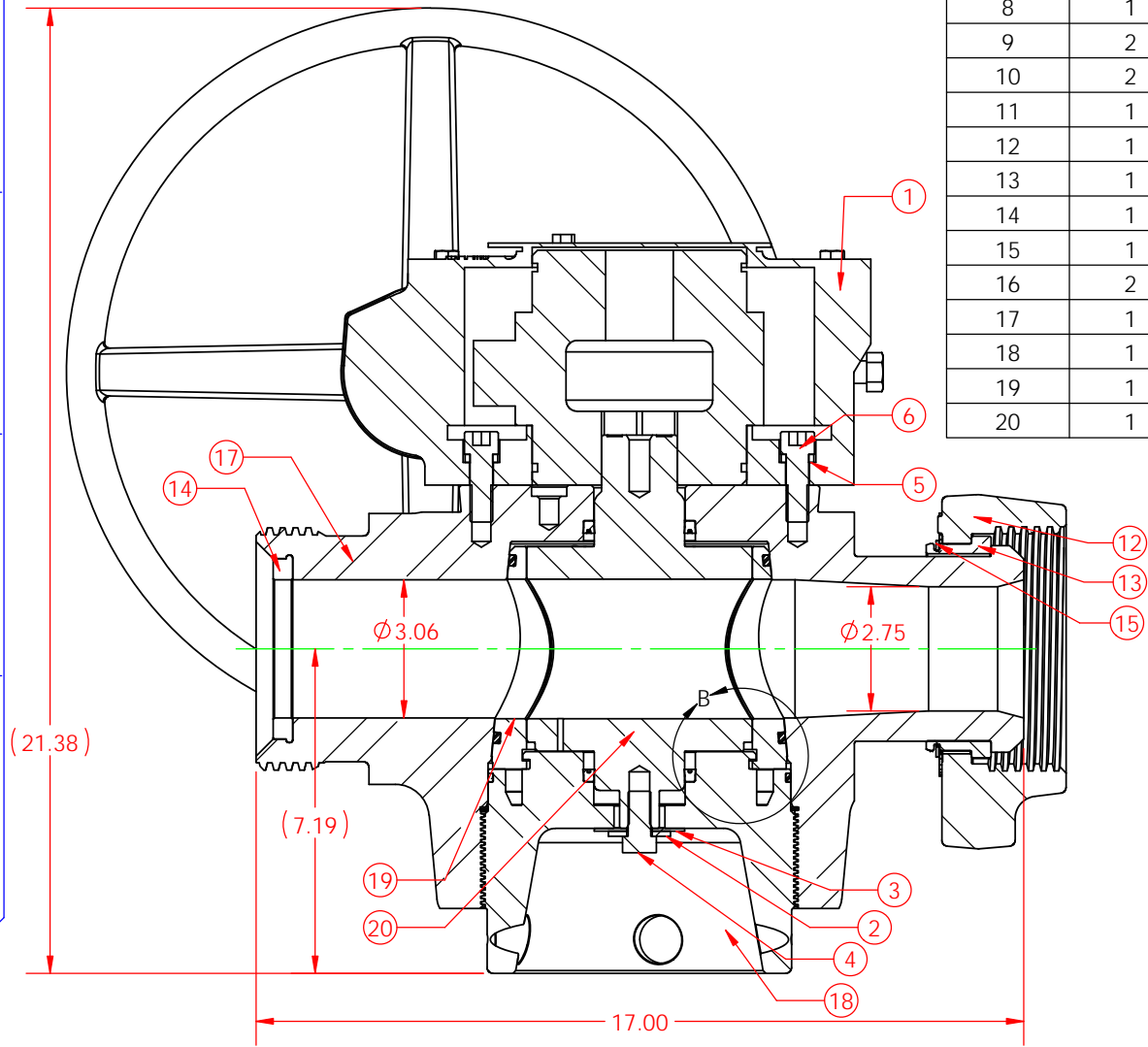



| ITEM NO. | QTY. | PART NUMBER | DESCRIPTION |
|----------|------|--------------------|---|
| 1 | 1 | AA0007 | GEAR OPERATOR, WMI 12M w/16"HANDWHEEL |
| 2 | 1 | HC0006 | FLAT WASHER, 1/2" STD |
| 3 | 1 | HC0007 | FLAT WASHER, 1/2" FENDER (2"OD) |
| 4 | 1 | HC0009 | HEX HD, 1/2"-20 x 1.00" |
| 5 | 6 | HC0023 | LOCK WASHER, 1/2" HIGH COLLAR |
| 6 | 4 | HC0034 | SOC HD, 1/2"-13 x 1.50" |
| 7 | 2 | HC0098 | HEX NUT, 1/2"-13 |
| 8 | 1 | HC0226-PSL2 | GREASE FITTING, 3/4" SAFETAP H2S GBH - PSL2 |
| 9 | 2 | HC0519 | HEX HD, 1/2"-13 x 4.50" FULLY THREADED |
| 10 | 2 | OC0002 | O-RING, 3" INSERT H2S (HNBR) |
| 11 | 1 | OC0004 | O-RING, 3" ADJ NUT H2S (HNBR) |
| 12 | 1 | UC0005-PSL2 | WINGNUT, 3"1502 H2S PSL2 |
| 13 | 1 | UC0006-PSL2 | NUT RETAINER SET, 3"1502 PSL2 |
| 14 | 1 | UC0014 | RESILIENT SEAL, 3"1502 H2S (HNBR) |
| 15 | 1 | UC0015 | SPIRAL RETAINER RING, 3"1502 |
| 16 | 2 | VC0005 | PLUG SEAL, 1.75" - 3" H2S (HNBR/BRASS) |
| 17 | 1 | VC0023-OA0152-PSL2 | VLV BODY, 3" x 3"1502 H2S 10M *ACT PSL2 |
| 18 | 1 | VC0029-PSL2 | ADJUSTING NUT, 3" H2S 15M PSL2 |
| 19 | 1 | VC0041S | INSERT SET, 3" H2S (SPLIT) |
| 20 | 1 | VC0070-PSL2 | PLUG, 3" H2S (HEX) PSL2 |



SECTION A-A

DETAIL B

| | | | | |
|-------------------|--|---------------|------|--|
| ECN NUMBER | DESCRIPTION | | |  <p>300 West Main Street Alice, TX 78332 www.diwmsi.com 800.242.0059 <small>MSI is a division of Dixie Iron Works, Ltd.</small></p> |
| | VALVE, 3" x 3"1502 H2S 10M (GEAR OP HWTS) PSL2 | | | |
| WORKING PRESSURE: | TEMPERATURE CLASS: | DRAWN BY: | | |
| 10,000 PSI | LU | RSE | | |
| RETAINED FLUIDS: | PR LEVEL: | DATE: | | |
| EE-0.5 | 1 | 10/14/11 | | |
| WEIGHT: | SHEET: | PART NUMBER: | REV: | |
| 302 lbs. | SHEET 1 OF 1 | VA0016-S-PSL2 | 0 | |

THIS DRAWING IS THE PROPERTY OF DIXIE IRON WORKS, LTD. THE BORROWER AGREES BY RECEIVING THE DRAWING TO RETURN IT UPON REQUEST AND TO NEITHER REPRODUCE COPY OR FURNISH INFORMATION FROM IT TO OTHERS WITHOUT EXPRESSED WRITTEN PERMISSION OF DIXIE IRON WORKS, LTD. ALL ARTICLES MANUFACTURED IN ACCORDANCE WITH THIS DRAWING SHALL BE CONSIDERED DESIGNS OF DIXIE IRON WORKS, LTD. AND MAY NOT BE USED OR SOLD WITHOUT DIXIE IRON WORKS, LTD. WRITTEN PERMISSION.