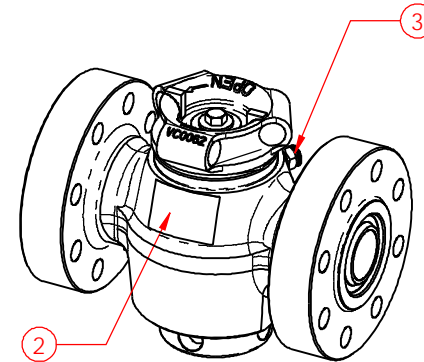
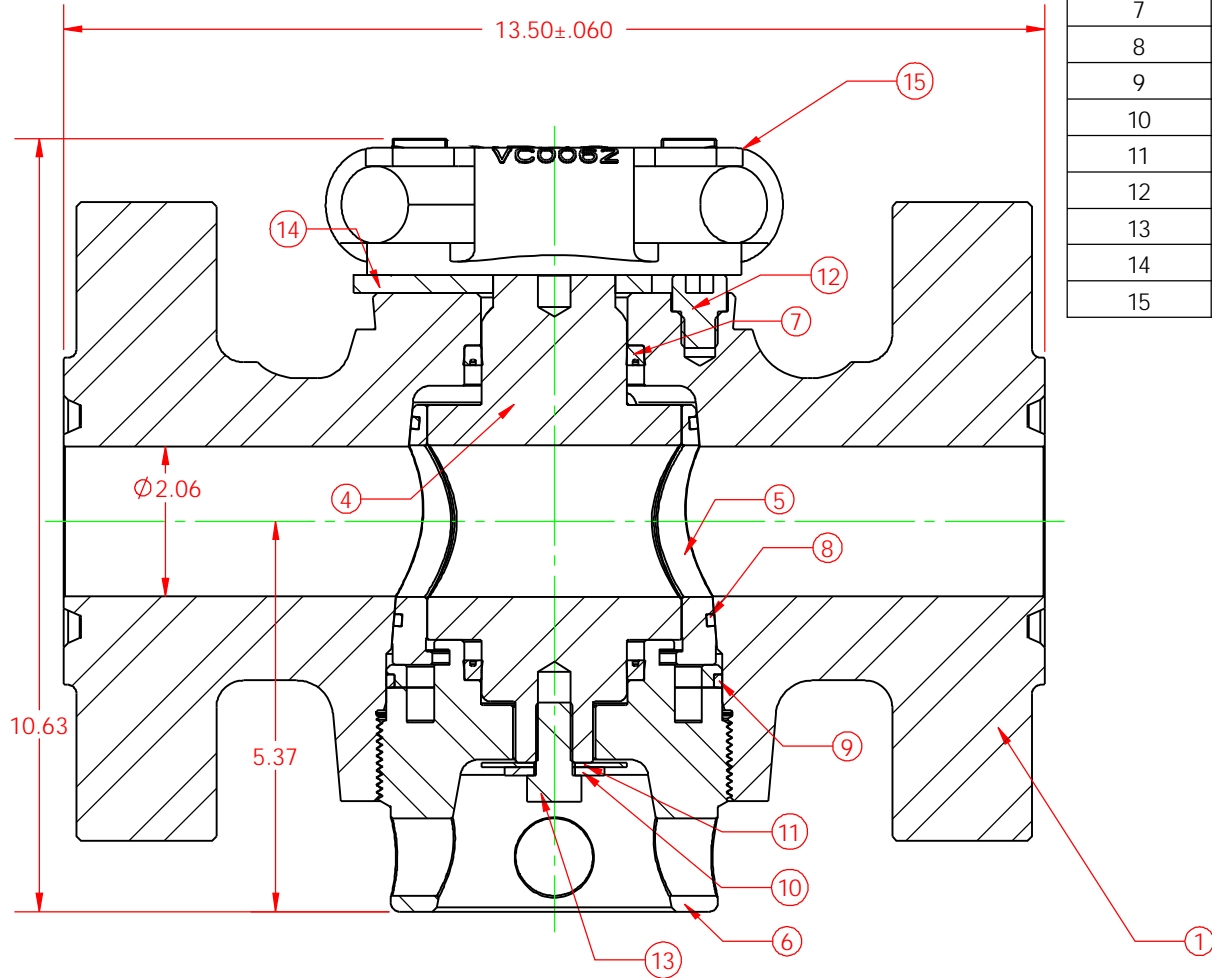


ITEM NO.	QTY.	PART NUMBER	DESCRIPTION
1	1	VC0073	VLV BODY, 2" x 2-1/16 15M BX152 FLANGE, H2S
2	1	VC0013	NAME TAG - VALVE (MSI/DIXIE) 2x3
3	1	HC0226	GREASE FITTING, 3/4" SAFETAP H2S GBH
4	1	VC0050	PLUG, 2"H2S
5	1	VC0049	INSERT SET, 2" H2S
6	1	VC0028	ADJUSTING NUT, 2" H2S
7	2	VC0005	PLUG SEAL, 2" H2S (HSN/BRASS)
8	2	OC0016	O-RING, 2" INSERT H2S (2-230 EOL985-85)
9	1	OC0020	O-RING, 2" ADJ NUT H2S (2-245 EOL985)
10	2	HC0006	FLAT WASHER, 1/2" STD
11	2	HC0007	FLAT WASHER, 1/2" FENDER (2"OD)
12	1	HC0008	SOC HD, 1/2"-13 x 0.50"
13	2	HC0009	HEX HD, 1/2"-20 x 1.00"
14	1	VC0061	STOP COLLAR, 2",3",4"
15	1	VC0062	HANDLE ADAPTER, 2", 3", 4"



THIS DRAWING IS THE PROPERTY OF DIXIE IRON WORKS, LTD. THE BORROWER AGREES BY RECEIVING THE DRAWING TO RETURN IT UPON REQUEST AND TO NEITHER REPRODUCE COPY OR FURNISH INFORMATION FROM IT TO OTHERS WITHOUT EXPRESSED WRITTEN PERMISSION OF DIXIE IRON WORKS, LTD. ALL ARTICLES MANUFACTURED IN ACCORDANCE WITH THIS DRAWING SHALL BE CONSIDERED DESIGNS OF DIXIE IRON WORKS, LTD. AND MAY NOT BE USED OR SOLD WITHOUT DIXIE IRON WORKS, LTD. WRITTEN PERMISSION.

NOTES
 1. BREAK ALL EDGES 0.030/0.016 x 45° OR R0.030/0.016 EXCEPT THREADS.
 2. ALL FINISHED CORNER RADI TO BE R0.031.
 3. ALL DIMENSIONS ARE IN INCHES (UNLESS OTHERWISE STATED).
 4. SURF START ALL NICKS, THREADS.
 5. ALL DIA'S ARE TO BE CONCENTRIC WITH 0.005 (UNLESS OTHERWISE STATED).
 6. FINISHED SURFACES TO BE 125µH Ra (UNLESS OTHERWISE STATED).
 7. ALL DIMENSIONS IN PARENTHESES ARE REFERENCE DIMENSIONS (X.XXX).

UNSPECIFIED TOLERANCES
 FRACTIONS ±1/64
 DECIMALS XX ±0.015
 XXX ±0.005
 XXXX ±0.001
 ANGLE ±1/2°

REVISION
 CHANGE MADE
 0

ECN NUMBER

DESCRIPTION

VALVE,
 2" x 2 1/16 15M H2S
 HANDLE ADAPTER

MATERIAL/ HEAT TREAT/ WELD PROCEDURE
 SOUR SERVICE
 15,000 PSI WORKING PRESSURE

DRAWN BY
 KB

DATE
 7/1/03

WEIGHT
 134

SHEET
 SHEET 1 OF 1

PART NUMBER
 VA0133

COMPUTER GENERATED BY



300 West Main Street
 Alice, Texas 78332

REV
 0