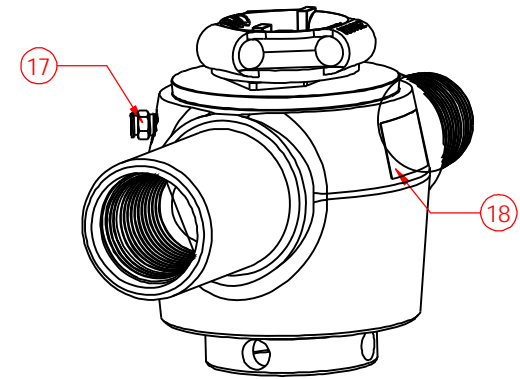
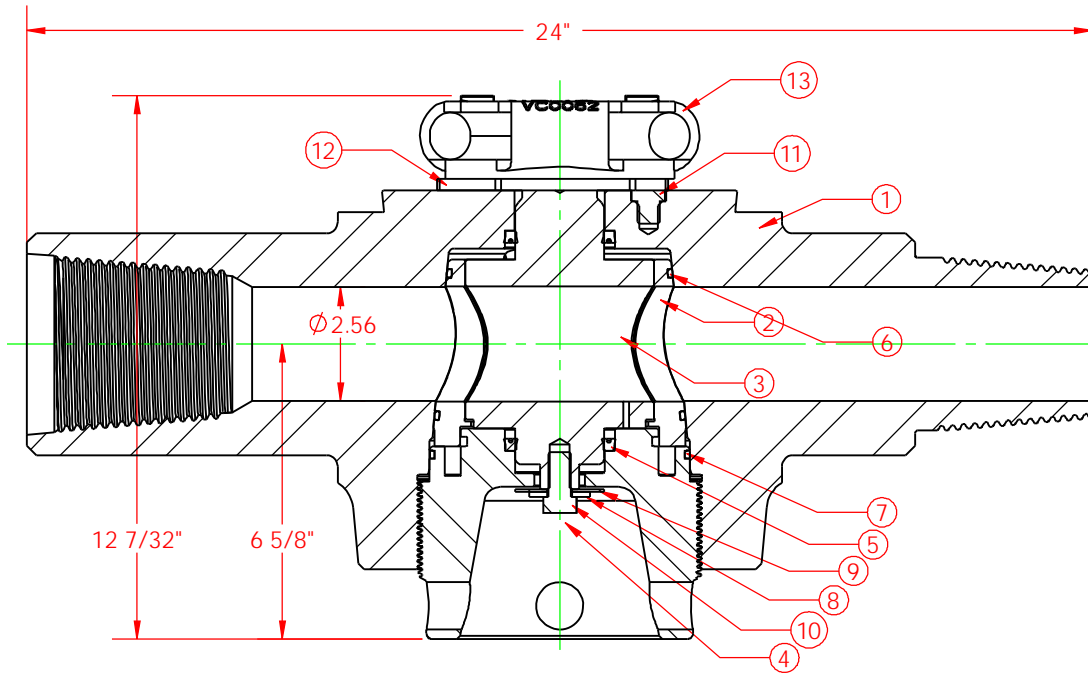


ITEM NO.	QTY.	PART NUMBER	DESCRIPTION
1	1	VC0343	VALVE BODY, 2.5" x 3.5"IF B/P H2S
2	1	VC0035	INSERT SET, 2.5" H2S UNISERT
3	1	VC0043	PLUG, 2.5" H2S
4	1	VC0020	ADJUSTING NUT, 2.5" H2S
5	2	VC0005	PLUG SEAL, 2" H2S (BUNA/BRASS)
6	2	OC0025	O-RING, 2.5" INSERT H2S
7	1	OC0026	O-RING, 2.5" ADJ NUT H2S
8	2	HC0006	FLAT WASHER, 1/2" STD
9	2	HC0007	FLAT WASHER, 1/2" OVERSIZED
10	2	HC0009	HEX HD, 1/2"-20 x 1.00"
11	1	HC0008	SOC HD, 1/2"-13 x 0.50"
12	1	VC0061	STOP COLLAR, 2", 3", 4"
13	1	VC0062	HANDLE ADAPTER, 2", 3", 4"
17	1	HC0226	GREASE FITTING, 3/4" SAFETAP H2S GBH
18	1	VC0013	NAME TAG- VALVE (MSI/DIXIE)



THIS DRAWING IS THE PROPERTY OF DIXIE IRON WORKS, LTD. THE BORROWER AGREES BY RECEIVING THE DRAWING TO RETURN IT UPON REQUEST AND TO NEITHER REPRODUCE COPY OR FURNISH INFORMATION FROM IT TO OTHERS WITHOUT EXPRESSED WRITTEN PERMISSION OF DIXIE IRON WORKS, LTD. ALL ARTICLES MANUFACTURED IN ACCORDANCE WITH THIS DRAWING SHALL BE CONSIDERED DESIGNS OF DIXIE IRON WORKS, LTD. AND MAY NOT BE USED OR SOLD WITHOUT DIXIE IRON WORKS, LTD. WRITTEN PERMISSION.

NOTES
 1. BREAK ALL EDGES 0.008/0.016 x 45° OR R0.008/0.016 EXCEPT THREADS.
 2. ALL MACHINED CORNERS/ROUNDS TO BE R0.031.
 3. ALL DIMENSIONS ARE IN INCHES (UNLESS OTHERWISE STATED).
 4. BLUNT START ALL NICKS/THREADS.
 5. ALL DIA/ERS TO BE CONCENTRIC WITH GD&M (UNLESS OTHERWISE STATED).
 6. MACHINED SURFACES TO BE 125µm Ra (UNLESS OTHERWISE STATED).
 7. ALL DIMENSIONS IN PARENTHESES ARE REFERENCE DIMENSIONS (XXXX).

UNSPECIFIED TOLERANCES
 FRACTIONS ±1/64
 DECIMALS XX ±0.015
 XXX ±0.025
 XXXX ±0.031
 ANGLE ±1/2°

REVISION
 0

CHANGE MADE

ECN NUMBER

DESCRIPTION

VALVE,
 2.5" x 2 9/16IF B/P H2S 10M

MATERIAL/ HEAT TREAT/ WELD PROCEDURE
 SOUR SERVICE
 10,000 PSI WORKING PRESSURE

DRAWN BY
 WJT
 DATE
 07/18/03

WEIGHT
 192.93 LBS

SHEET
 SHEET 1 OF 1

PART NUMBER
 VA0138

REV
 0

